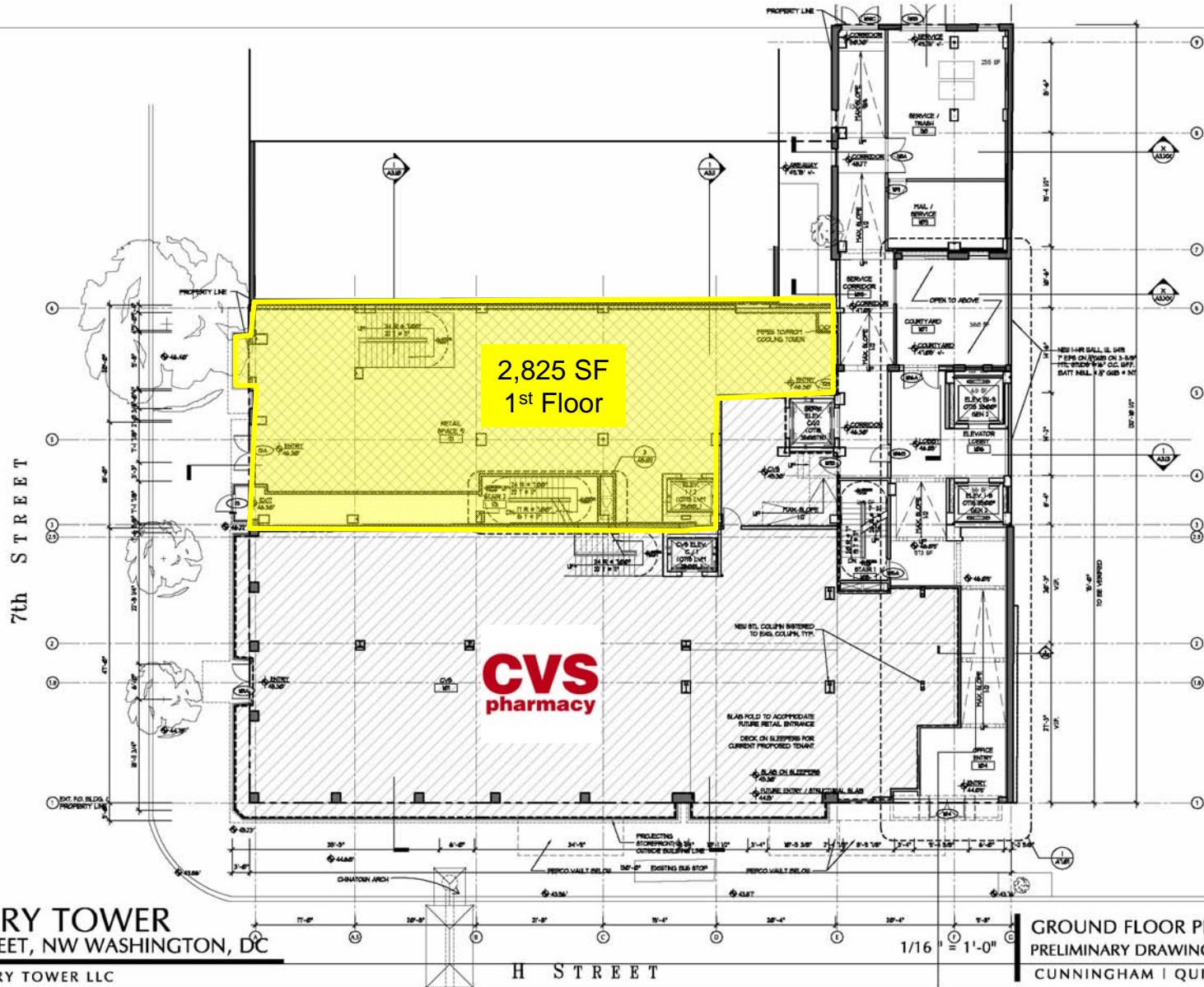
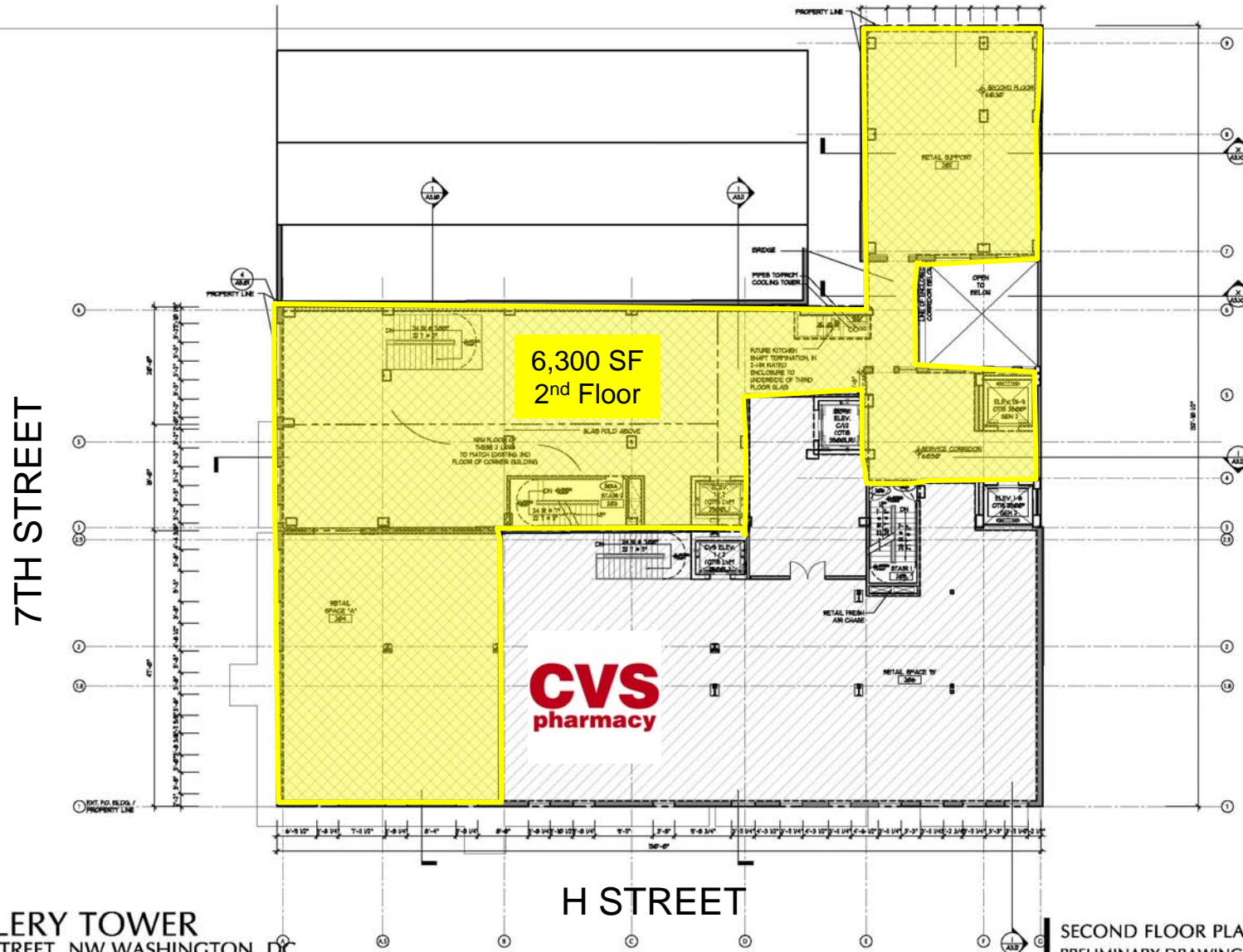


GALLERY ROW

Washington, DC



GALLERY TOWER
675 H STREET, NW WASHINGTON, DC
NEW GALLERY TOWER LLC



GALLERY TOWER
675 H STREET, NW WASHINGTON, DC
NEW GALLERY TOWER LLC

SECOND FLOOR PLAN
PRELIMINARY DRAWINGS October 2010
CUNNINGHAM | QUILL ARCHITECTS, PLLC

1/16" = 1'-0"