



7000 Wisconsin Avenue

### BUILDING HIGHLIGHTS

- 4,300 square feet of second floor office/retail space
- Tremendous signage opportunity fronting Wisconsin Avenue
- Fully built-out space wired with phone & data includes a large reception area, 8 offices, a conference room, a full employee kitchen, and dedicated bathrooms
- Floor to ceiling windows overlooking Wisconsin Avenue
- Entrances from Wisconsin Avenue and a rear alley
- Walking distance to Bethesda Metro Station
- \$25.00 Full Service

**BILL MILLER**

202.775.7033

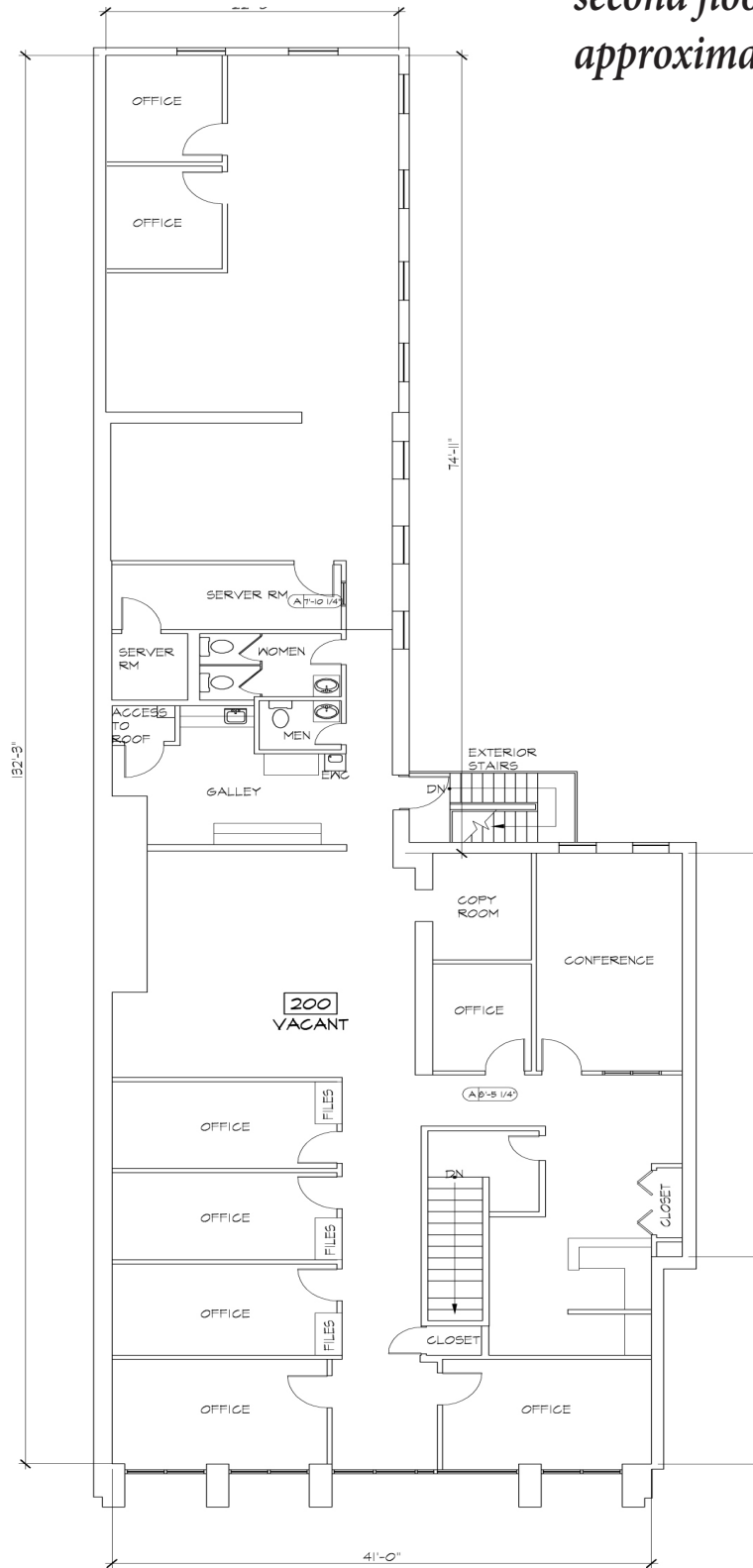
bill.miller@transwestern.net

**ALEX WALKER**

202.775.7087

alex.walker@transwestern.net

second floor  
approximately 4,300 gross sf



TRANSWESTERN



1 SECOND FLOOR PLAN  
SCALE: 1/8"=1'-0"