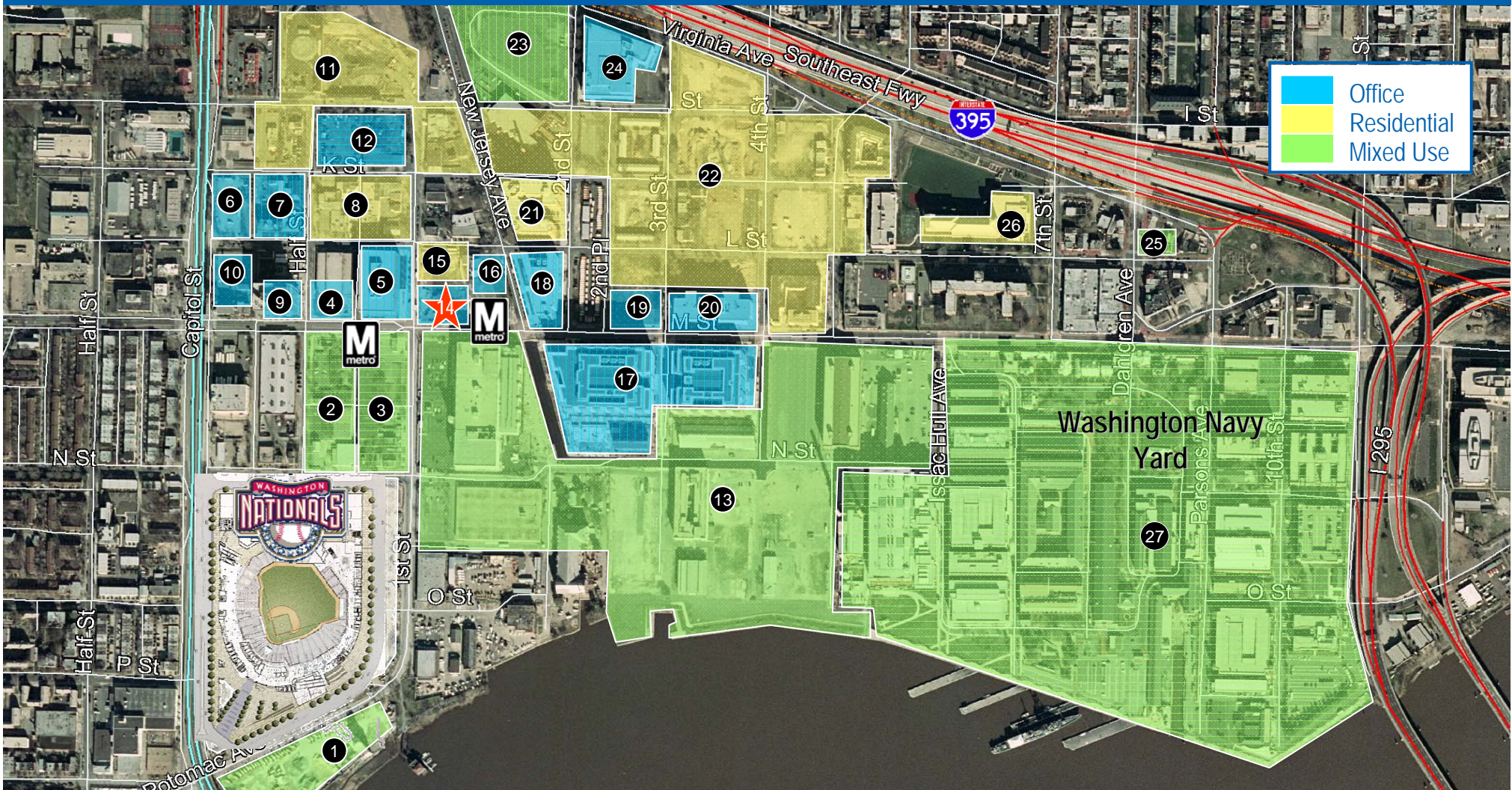


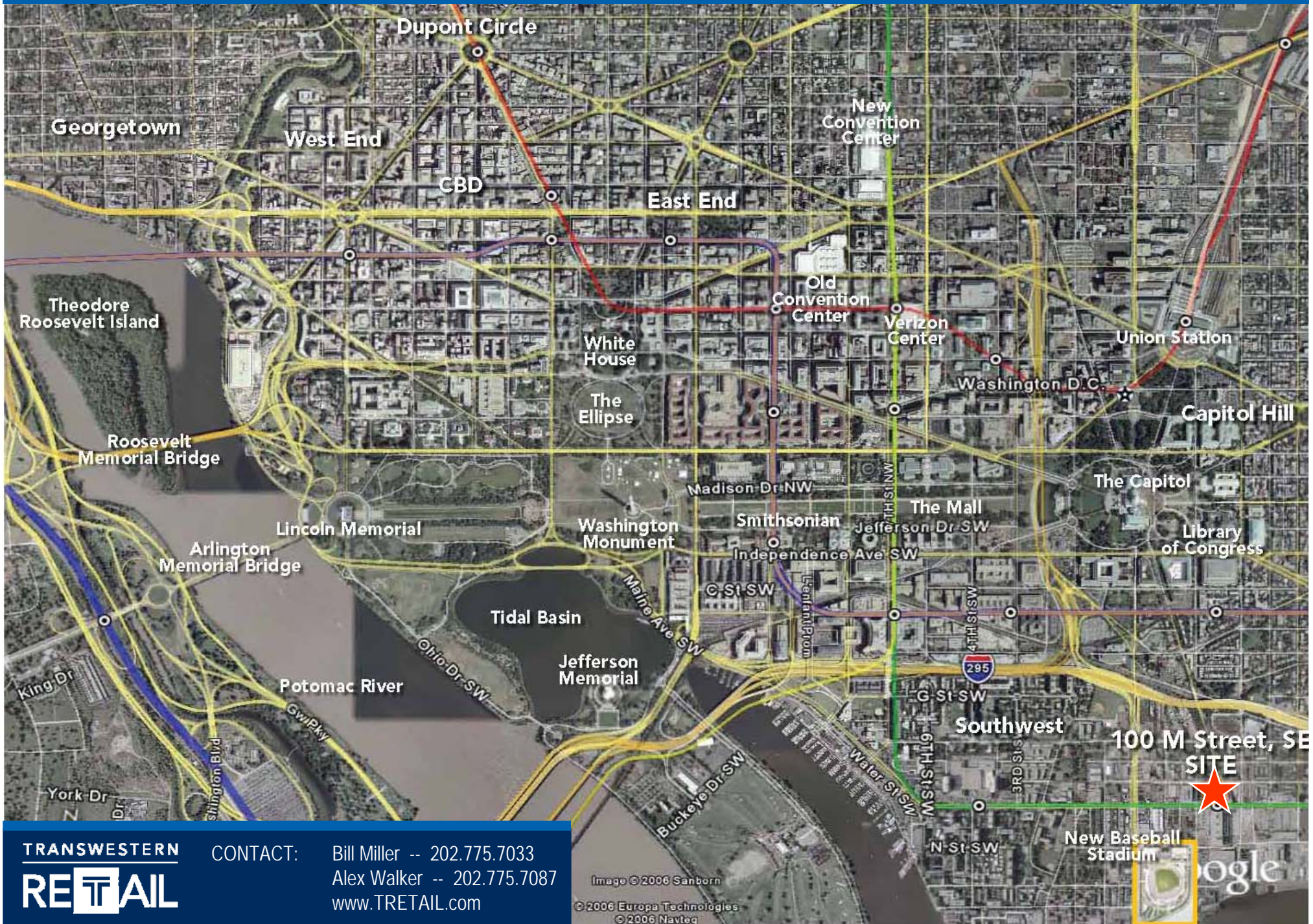
# CAPITOL RIVERFRONT | WASHINGTON, DC



	Office
	Residential
	Mixed Use

- |  |  |   |
|--|--|---|
| <ul style="list-style-type: none"> <li>1. Florida Rock – 1.432 million SF</li> <li>2. Half Street Phase 1 – Office: 225,000 SF Retail: 50,000 SF Hotel: 200 units Residential: 300 units</li> <li>3. Square 701 – 800,000 SF</li> <li>4. 50 M St – Office: 135,000 SF Retail: 5,000 SF</li> <li>5. 80 M St - Office: 275,000 SF</li> <li>6. 1000 S Capitol – Office: 320,000 SF Retail: TBD</li> <li>7. 1015 Half St – Office: 41,000 SF Retail: 20,000 SF</li> <li>8. Velocity Condos – 200 Units</li> <li>9. 20 M St – Office: 180,633 SF Retail: 10,000 SF</li> </ul> | <ul style="list-style-type: none"> <li>10. 1100 S Capitol – Office: 350,000 Retail: TBD</li> <li>11. Capitol Yards –Residential: 1,352 units Retail: 41,000 SF</li> <li>12. Plaza on K – Office: 820,000 SF Retail: 35,000 SF</li> <li>13. The Yards – 42 acres</li> <li>★ 14. 100 M St – Office: 225,000 SF Retail: 12,000 SF</li> <li>15. Onyx on First – 266 condos</li> <li>16. 1111 New Jersey – Office: 146,000 SF Retail: 10,112 SF</li> <li>17. US Dept Transportation - Office: 1.35 Million SF Retail: 22,300 SF</li> <li>18. Federal Gateway I – Office: 293,000 SF Retail: 18,000 SF</li> <li>19. Federal Gateway II – Office: 293,000 SF Retail: 18,000 SF</li> </ul> | <ul style="list-style-type: none"> <li>20. 300 M St –Office: 278,500 SF Retail: 2,500 SF</li> <li>21. Capitol Hill Towers Coop – 344 units Retail: 8,000 SF</li> <li>22. Arthur Capper/ Carrollsburg –1,626 units</li> <li>23. 800 New Jersey - 1.2 million SF</li> <li>24. 225 Virginia Ave – Office: 421,000 SF</li> <li>25. Admiral at Barracks Row – Office: 4,750 SF Retail: 3,200 SF Residential: 177 condo units</li> <li>26. Marine Bachelor Enlisted Quarters</li> <li>27. Washington Navy Yard</li> </ul> |
|--|--|---|

# WASHINGTON, DC | AERIAL OVERVIEW



**TRANSWESTERN**  
**RETAIL**

CONTACT: Bill Miller -- 202.775.7033  
Alex Walker -- 202.775.7087  
www.TRETAIL.com

Image © 2006 Sanborn  
© 2006 Europa Technologies  
© 2006 Navteq

